



CE 0036



ChemValve-Schmid
Armaturentechnik



2007/06 :: | ::www.chemvalve-schmid.com:: | ::info@chemvalve-schmid.com:: | ::T:+41 32 639 50 10:: | ::F:+41 32 639 50 15::

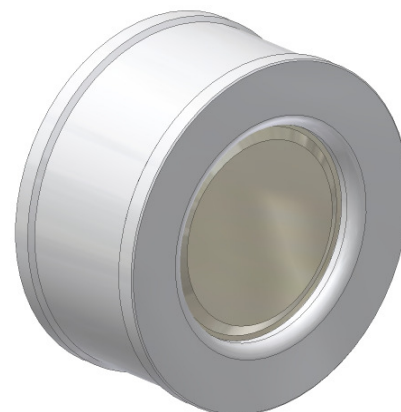
::Data Sheet:: | ::Chapter 5::

Page 1/2

::Non Return Valve Type CSD:: | ::DN 125 - 350:: | ::PN 10::

Non Return Valve Type CSD DN 125 - 350

Designation	Material
Body	see table
Flange	see table
Disc	see table
Spring	see page 2.32
Soft sealing	see table
Centre ring	see page 2.02/2



Technical specifications

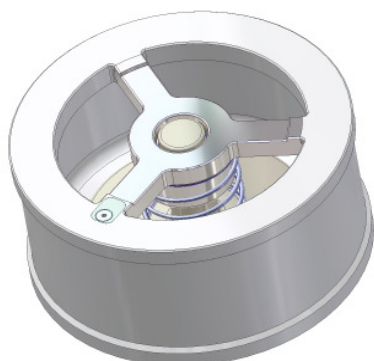
Placement between flange according to DIN EN 1092-1, PN 10

Operational limits according to DIN EN 1092-1 and AD-Merkblätter W10

Tightness according to DIN 3230/3, BN 2 and BO 3

Overall lengths according to DIN EN 558-1, Gr. 49, from DN 250 on DIN EN 558-2, Gr. 52

Identification according to DIN EN 19



Utilisation

For liquids, gases and steams in all process technology.

Constructional features

Centring integrated on the body
Guiding of valve plate by body ribs

Special types

Nimonic springs for temperatures above 300°C

Special springs for different opening pressures

Placement between flange according to DIN 1092-1, PN 16 - 40 and ANSI B 16.5 CL. 150-300 lbs with centre ring according to the following page 2.02/2

Designation: CSD- 6 4 6 4 - M - 1 5 0
CSD- □□ - □□ - □ - □□□ → DN 125 - 350

Body			Valve plate			Soft sealing		
Material	Nr.	Code	Material	Nr.	Code	Material	Temperatur	Code
Steel	1.0619	27	Steel	1.0619	27	Metal-seated	-200 bis 500°C	M
Bronce	2.1086	33	Austenit	1.4408	64	EPDM	-50 bis 130°C	E
Austenit	1.4408	64				NBR	-30 bis 120°C	P
						VITON	-20 bis 200°C	V
						PTFE	-200 bis 200°C	T
						Depending on pressure and medium		

Subject to change without notice



CE 0036



ChemValve-Schmid
Armaturentechnik

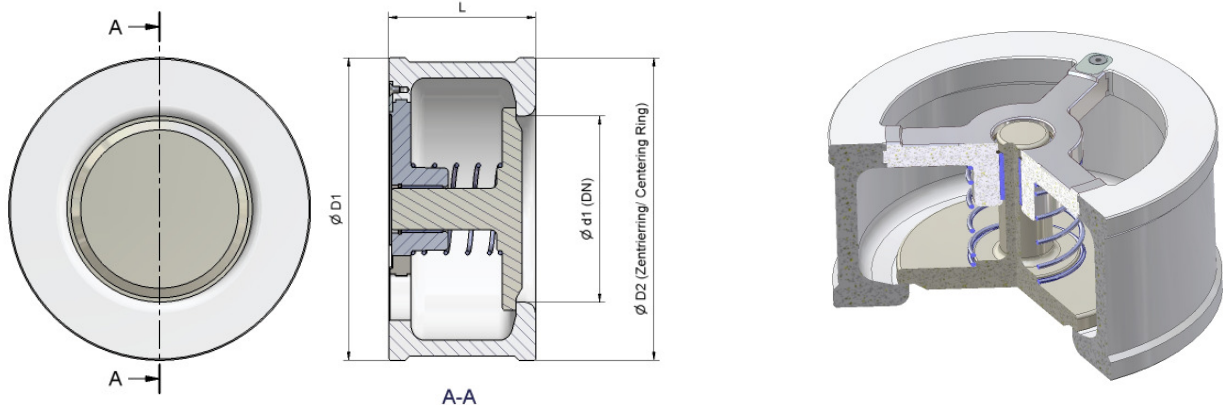


2007/06 :: | ::www.chemvalve-schmid.com:: | ::info@chemvalve-schmid.com:: | ::T:+41 32 639 50 10:: | ::F:+41 32 639 50 15::

::Data Sheet:: | ::Chapter 5::

Page 2/2

::Non Return Valve Type CSD:: | ::DN 125 - 350:: | ::PN 10::



DN (mm)	125	150	200	250	300	350
DN (zoll)	5"	6"	8"	10"	12"	14"
Ø D1,PN10	192	218	273	328	378	438
Ø D2,PN16	192	218	273	328	378	444
Ø D2,PN25	192	226	283	338	400	457
Ø D2,PN40	192	226	290	352	417	474
Ø D2,ANSI150	192	218	273	338	400	447
Ø D2,ANSI300	212	247	304	352	417	482
L	90	106	140	200	250	280
Weight (kg)	10	14	24	50	77	108

For the hatched pressure rates has to be used a centre ring (price list extracharges 2.35)

Opening pressures (mbar)

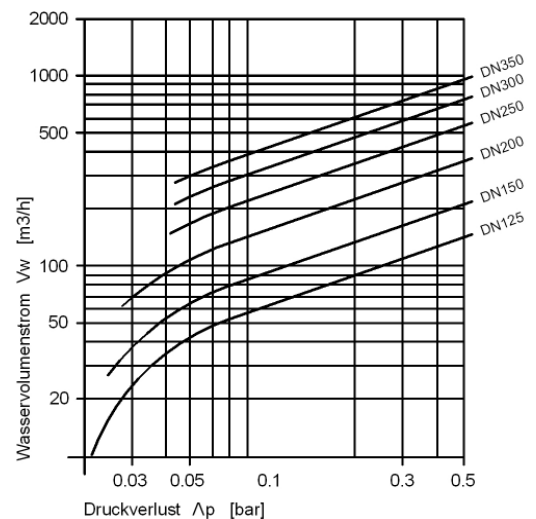
DN (mm)	125	150	200	250	300	350
DN (zoll)	5"	6"	8"	10"	12"	14"
ΔP ↑	37	40	46	69	73	73
ΔP →	22	25	28	42	44	44
ΔP ↓	7	10	10	15	15	15

Pressure drop diagram

Pressure drop diagram for water at 20°C with opened valve and horizontal flow.
For calculating the pressure drop of the medium the equivalent water flow volume has to be calculated..

$$\dot{V}_w = \dot{V} \sqrt{\frac{\rho}{1000}}$$

- \dot{V}_w = Equivalent water flow volume in m3/h
- ρ = Density of the medium (in use) kg/m3
- \dot{V} = Flow volume of the medium (in use) in m3/h



Subject to change without notice